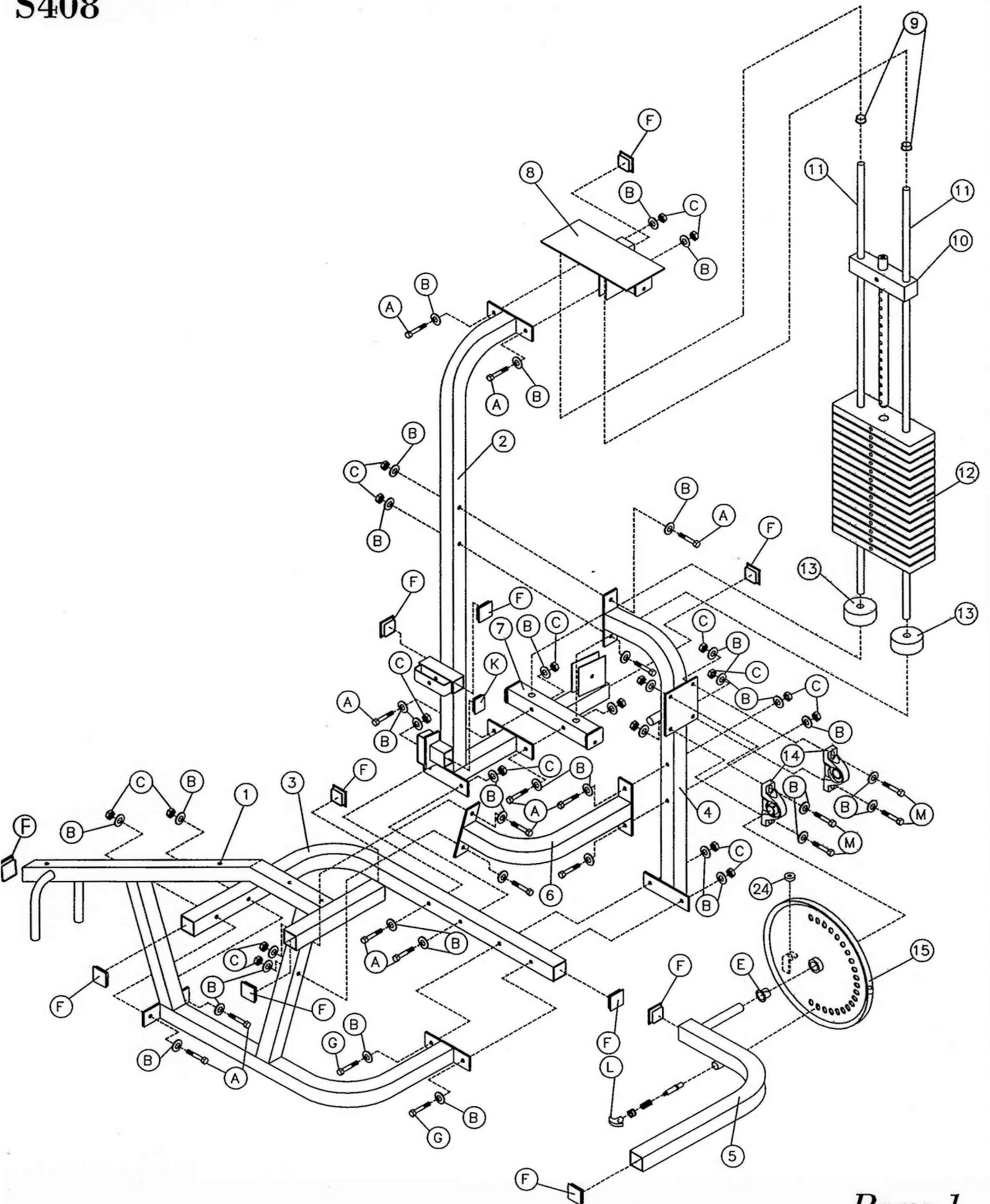
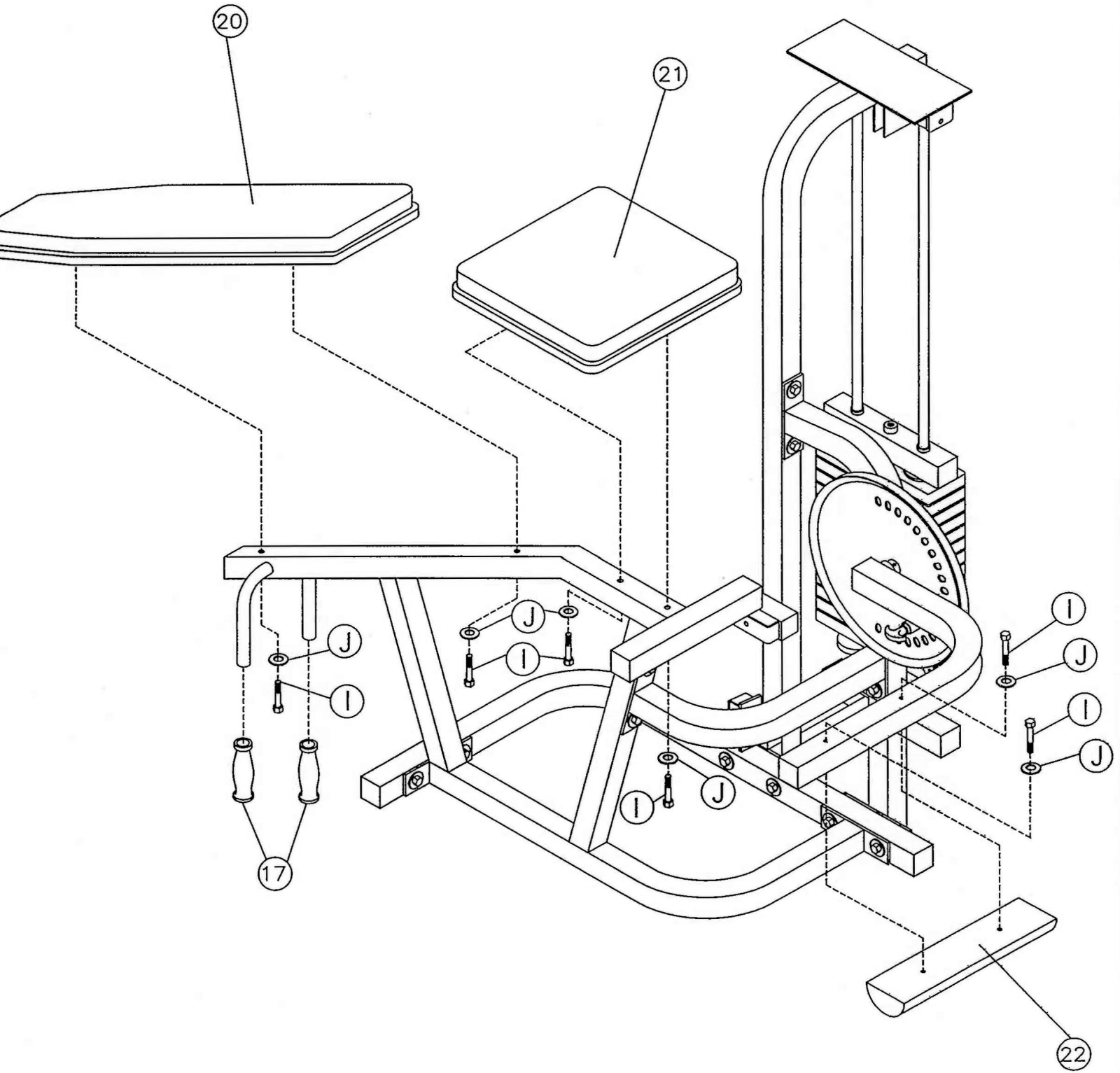


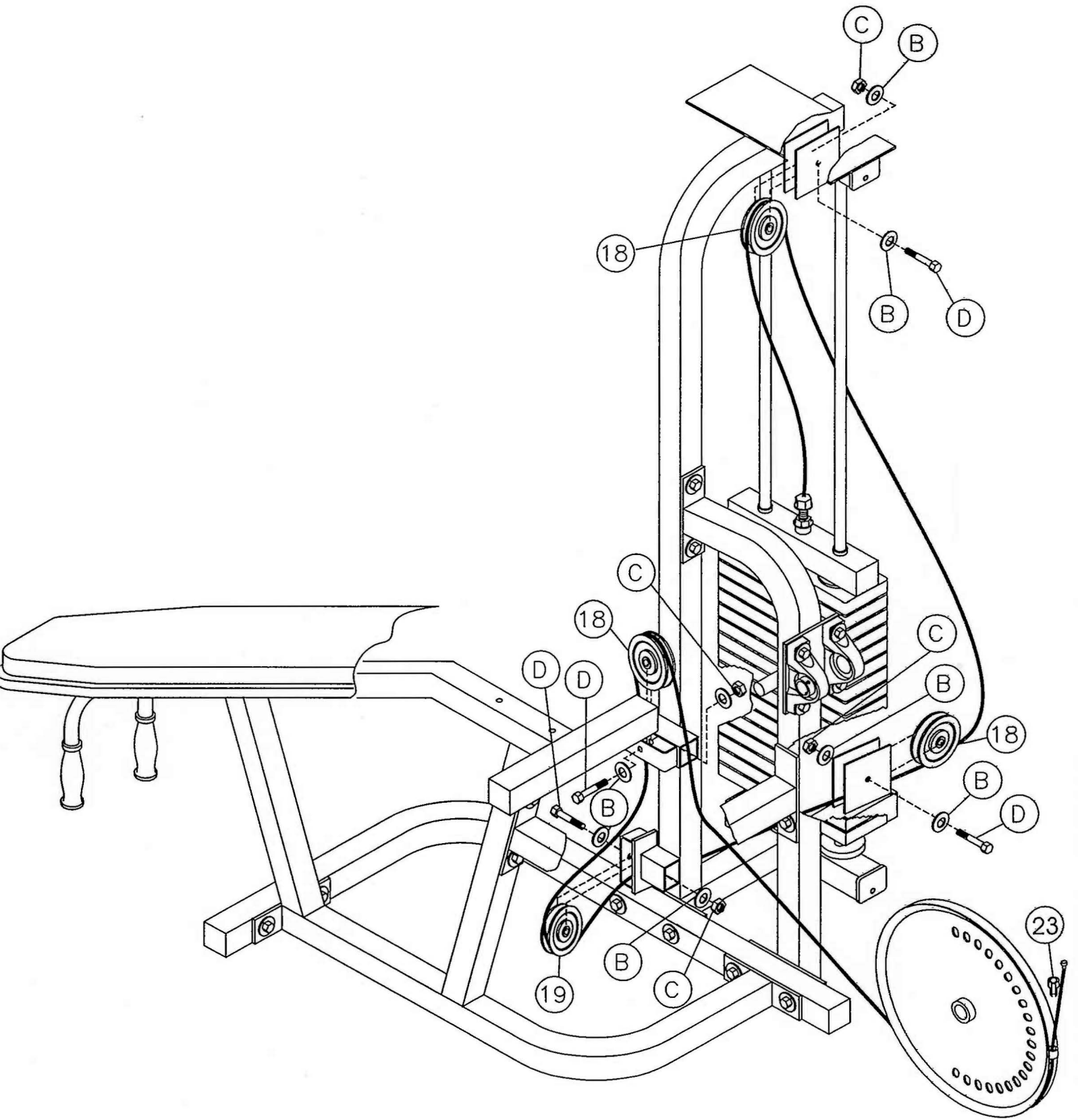
HOIST[®]
FITNESS SYSTEMS

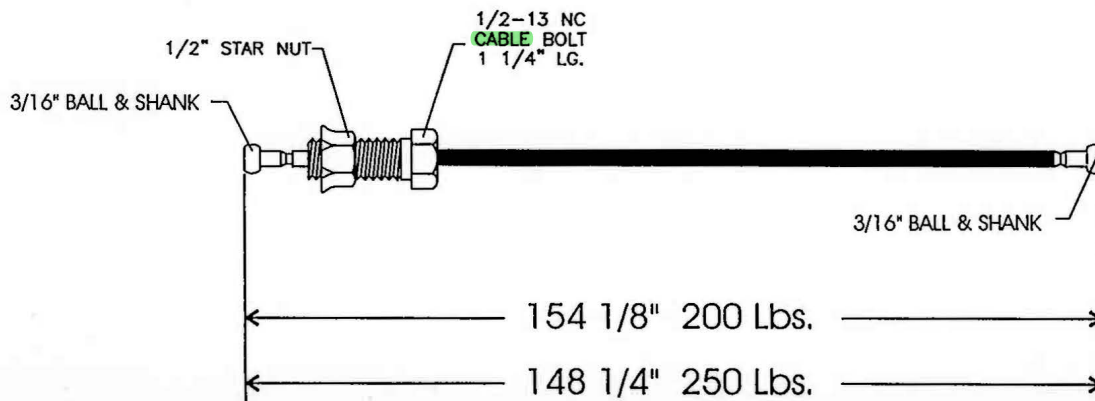
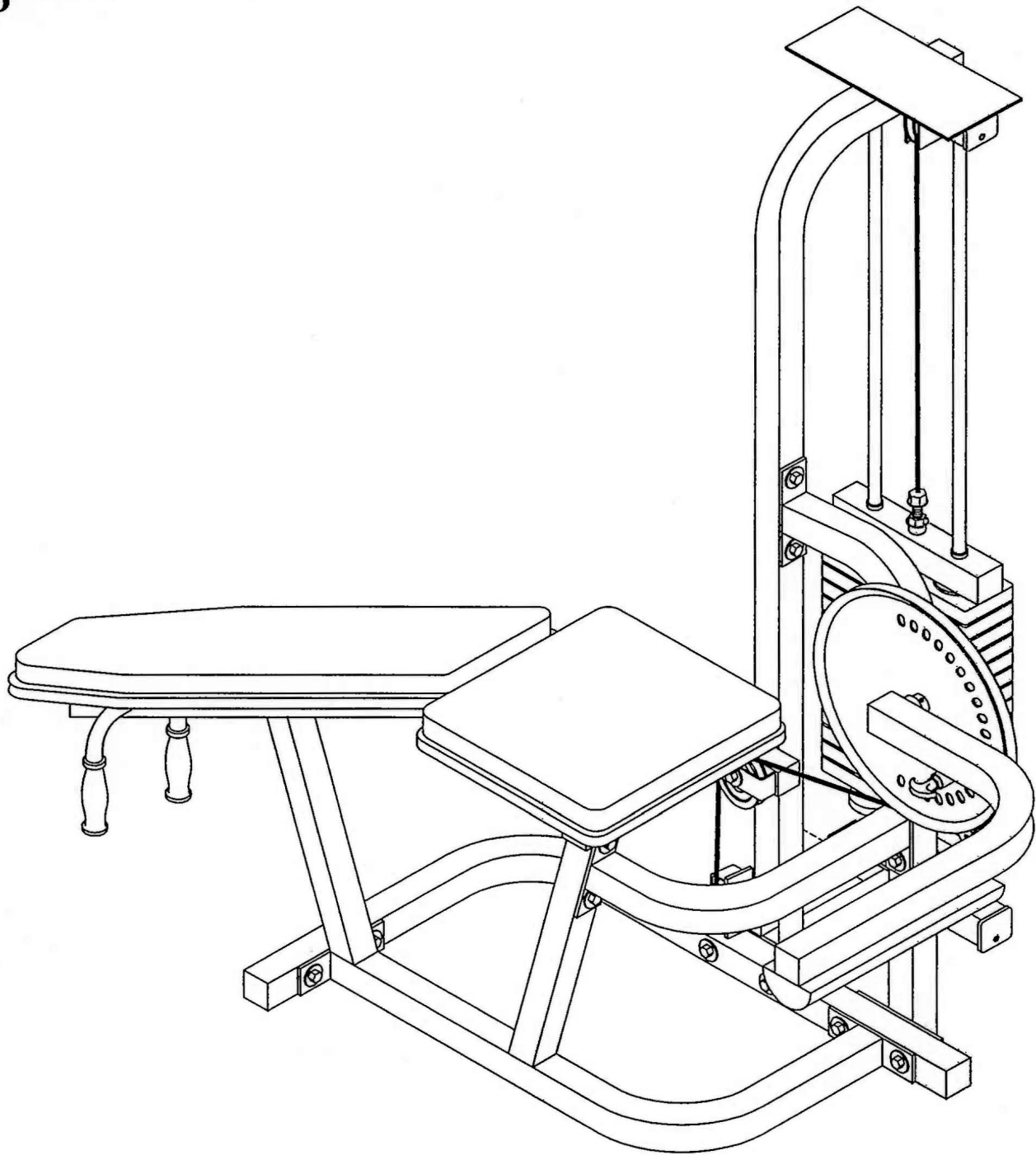
S408
LYING LEG CURL

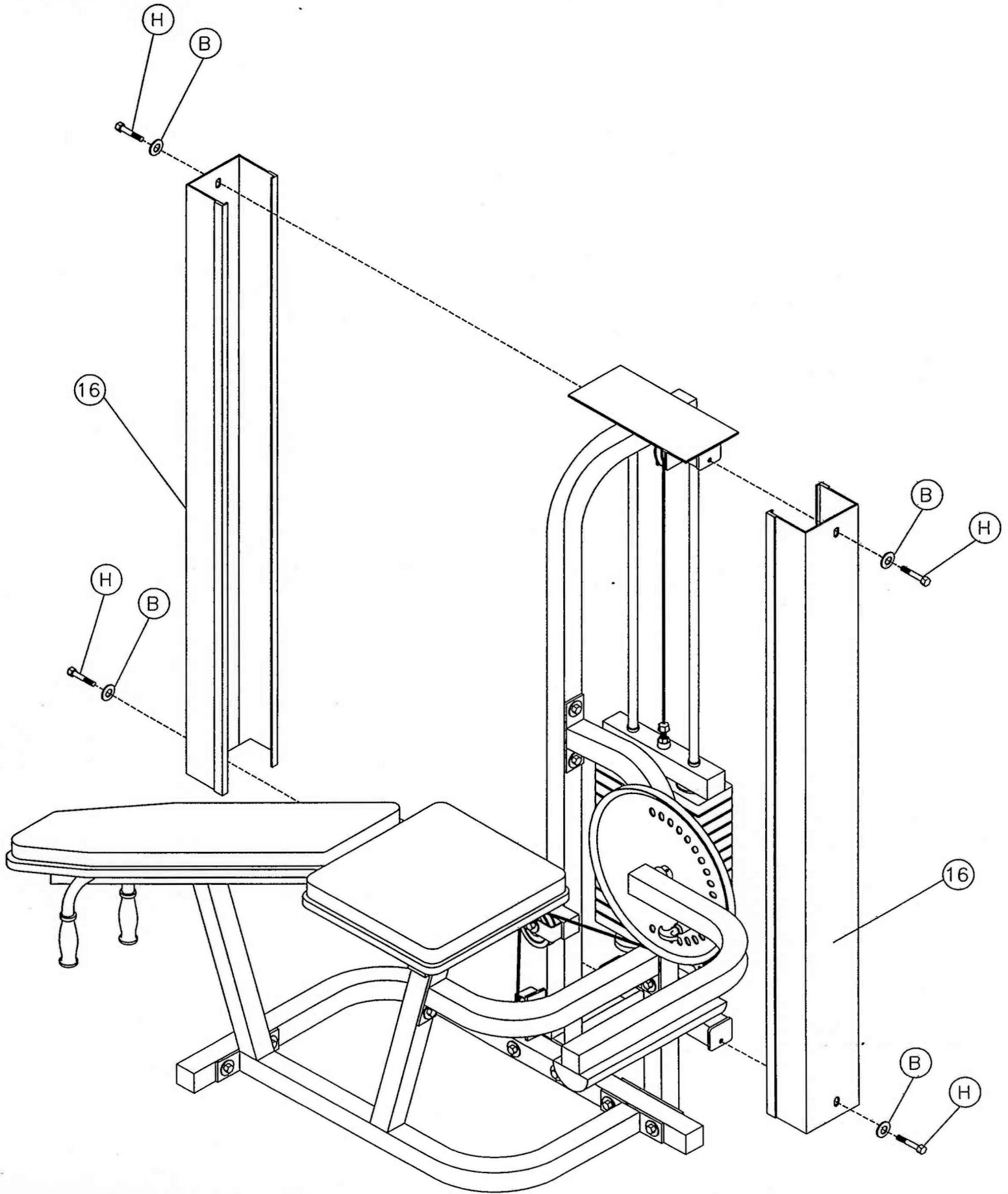












Key No.	Qty.	Part Number	Description
1	1	61-S408-11	Body Support Frame
2	1	61-S408-02	Weight Upright
3	1	61-S408-08	Base Frame
4	1	61-S408-03	Pivot Mount Assembly
5	1	61-S408-06	Arm Assembly
6	1	61-S408-09	Crossmember
7	1	61-S408-05	Weight Stack (Bottom)
8	1	61-S408-04	Weight Stack (Top)
9	2	14-BSH-GRD1	Guide Rod Snap Bushing
10	1	26-STD-SWTOP1	8 1/2 Lb. Top Plate W/ Stem
11	2	26-STD-SG107	3/4" Dia. x 59 3/4" Guide Rods
12	15	26-STD-SW101	12 1/2 Lb. Weight Plate
13	2	19-WSB-12	1/2" Rubber Donut
14	2	14-BRG-RAD1PILP	Pillow Block
15	1	61-S408-07	Cam Adjuster
16	2	26-STD-SSH120	59 3/4" Weight Stack Shield
17	2	19-GRD-78514T	Tapered Grip
18	3	18-PUL-412	4 1/2" Pulley
19	1	18-PUL-312	3 1/2" Pulley
20	1	26-STD-SU1516	15" x 16" Pad
21	1	26-STD-SU1034	10" x 34" Tapered Pad
22	1	26-STD-SU416	4" x 16" Half Round Pad
23	1	26-STD-SM199	1/4" Quick Release Cable Lock
24	1	19-PLG-1	Plug Bumper

Key No.	Qty.	Part Number	Description
A	13	11-HEX38234	3/8" x 2 3/4" Hex Bolt
B	44	13-FLT-38	3/8" USS Flat Washer
C	21	12-LOK-38	3/8" Center Lock Hex Nut
D	4	11-HEX-382	3/8" x 2" Hex Bolt
E	1	11-BRG-NYL1	Nyliner Bushing
F	11	16-CAP-22	2" x 2" End Cap
G	2	11-HEX-383	3/8" x 3" Hex Bolt
H	4	11-HEX-381	3/8" x 1" Hex Bolt
I	6	11-HEX-516314	5/16" x 3 1/4" Hex Bolt
J	6	13-FLT-516	5/16" USS Flat Washer
K	1	16-CAP-1122	1 1/2" x 2 End Cap
L	1	61-STD-SM129	1/2" Long Pull Pin
M	4	11-HEX-38134	3/8" x 1 3/4" Hex Bolt